

B.

RECORD CARD FOR SECULAR MONUMENTS.

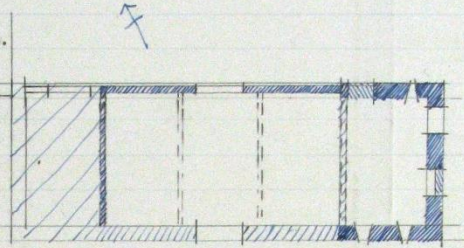
(N.B.—Detail of special interest is to be entered here, but described fully on a separate card.)

- Name and situation of Monument** (with owner's Name and Address). *Old House Barn*
3/4 mile N.E. of Church.
- General appearance:** (a) No. of storeys. *1* *basement under E bay.*
(b) Building materials. *Timber frame on stone plinth + stone rubble walls.*
(c) Roofs. *Stone slates.*



- Historical development** (with dates and small sketch plan).

A 17th c. barn. Probably c. 1700 the most E bay was re-built with stone walls with 'half basement' under. In modern times the S. wall of remainder has been re-built in stone + a modern addition built on at W end.



- Special features** (if any).

- Elevations:** (Beginning with the main front, and mentioning, in the following order:—(a) Walls; (b) Gables; (c) Doors; (d) Windows; (e) Chimneys; (f) Rainwater heads and pipes.)

N. Elev. E end. rubble stone. Remainder timber framed on stone plinth. Upper panels of framing are filled with wide interlaced laths. In E wall is a blocked door in timber framed part is a double door.
E. Elev. Stone rubble, exposed timbers, + gabled. There is a blocked window on ground floor level.
S. Elev. In E bay are two slit windows + the post of a cross partition is exposed. Remainder re-built in stone.
W. Elev. Gabled weather boarded. Lower part hidden by late 18th c. addition.

- Grounds:** (a) Gardens; (b) Outbuildings; (c) Statuary, sundials, etc.



Immediately N.E. of this barn is another barn which has been re-built but which incorporates a 17th c. timber framed wall + gable at its N.E. end.

County. *Herefordshire.* Parish. *Llanveynoe.* Sub-Commission. *Seaver.* No. of Monument. *(5)*

7. Interior: (Disposition of rooms, if original, giving fittings as they occur (see list), beginning with the ground floor, following with the basement, and working up to the attics; staircases in the same manner.)

- Fittings:**
(Reminder list).
- (1) Ceilings.
 - (2) Cupboards (fixed).
 - (3) Doors and Overdoors.
 - (4) Fireplaces and Mantel-pieces.
 - (5) Glass.
 - (6) Paintings.
 - (7) Panelling.
 - (8) Parquetry and floors.
 - (9) Plasterwork on internal walls.
 - (10) Roofs and beams (internal).
 - (11) Screens.
 - (12) Tapestries.
 - (13) Miscellaneous (e.g., carving, ironwork, locks, &c.).



There are 4 timber trusses. The two western ones being of type →  while other two are of type → 

- 8. Condition: Bad.
- 9. Visited by (with dates): A.T. Phillips. May 1927.
- 10. Bibliography:
- 11. No. of Ordnance Sheet (6-in.): XLIII. N.E.
- 12. Signature of Investigator. A.T. Phillips.