

B.

RECORD CARD FOR SECULAR MONUMENTS.

(N.B.—Detail of special interest is to be entered here, but described fully on a separate card.)

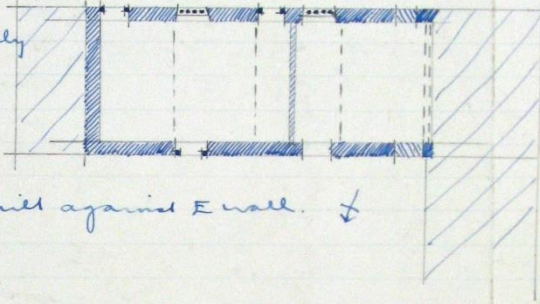


County. Herefordshire
Parish. Llanveynoe
Sub-Commission. Severn
No. of Monument. 11

1. Name and situation of monument (with owner's Name and Address). *Barn at Cayo Farm
2 miles S.S.E of Church.*
2. General appearance: (a) No. of storeys. *2.*
(b) Building materials. *Stone rubble.*
(c) Roofs. *Stone slates.*

3. Historical development (with dates and small sketch plan).

*Built probably early
late in 16th or early 17th
c. & was possibly originally
a house. In modern times
a new floor has been
inserted to hay loft & a
large barn built on at the
W end & an addition built against E wall.*



4. Special features (if any).

5. Elevations: (Beginning with the main front, and mentioning, in the following order:—(a) Walls; (b) Gables; (c) Doors; (d) Windows; (e) Chimneys; (f) Rainwater heads and pipes.)

- S. Elev. Stone rubble. On ground floor is a blocked door & two stop chamfered door frames with battened doors hung on strap hinges. Then a two/ four light diamond mullioned window. On 1st floor an a 5 light diamond mullioned window & a blocked window with 2 slit windows between them.*
- W. Elev. Incorporated into later barn in which the exposed timber framed partition can be seen.*
- N. Elev. On ground floor is stop chamfered wood door frame with battened door. Towards W end upper part of wall has been re-built & openings for pigeon loft inserted.*
- E. Elev. Gabled. Exposed timbers. On 1st floor level is a 4 light diamond mullioned window with wood lintel above.*

6. Grounds: (a) Gardens; (b) Outbuildings; (c) Statuary, sundials, etc.

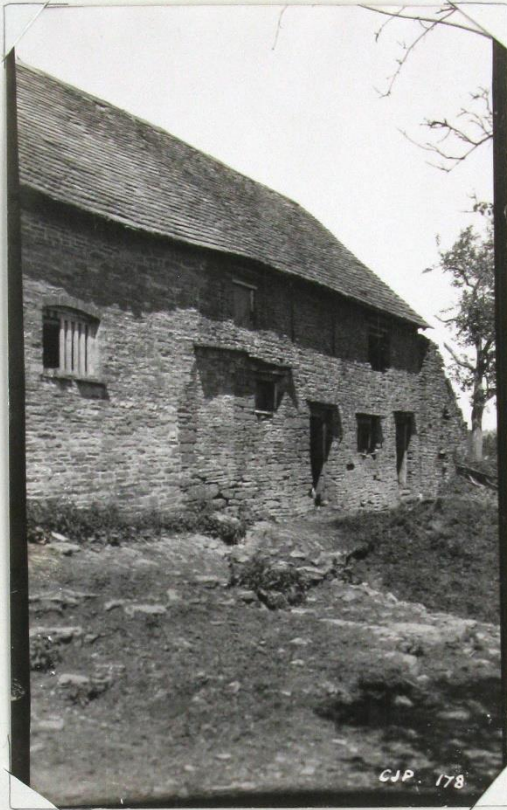
The present farm house would appear to be a late 18th or early 19th c. building but it incorporates some old material.

7. Interior: (Disposition of rooms, if original, giving fittings as they occur (see list), beginning with the ground floor, following with the basement, and working up to the attics; staircases in the same manner.)

Fittings:

(Reminder list).

- (1) Ceilings.
- (2) Cupboards (fixed).
- (3) Doors and Overdoors.
- (4) Fireplaces and Mantel-pieces.
- (5) Glass.
- (6) Paintings.
- (7) Panelling.
- (8) Parquetry and floors
- (9) Plasterwork on internal walls.
- (10) Roofs and beams (internal).
- (11) Screens.
- (12) Tapestries.
- (13) Miscellanea (e.g., carving, ironwork, locks, &c.).



The three roof trusses are of type



8. Condition: *Fair.*

9. Visited by (with dates): *A.T. Phillips. May 1927.*

10. Bibliography:

11. No. of Ordnance Sheet (6-in.): *XLIII. S.E.*

12. Signature of Investigator.

A.T. Phillips

1 2 3 4 5 6 7 8 9 10 11 12 13 14 15
Rustless Chrome Face
N° 34R
1/16
4
Made in England
64
3
Rabone
Chesterman
2
1



CJP. 178