

A (1) **RECORD CARD FOR ECCLESIASTICAL MONUMENTS.**

1. **DEDICATION.** *S. Peter*

2. **SITUATION.** *In a lonely position on a ridge E. of the Olchon Valley & Black Mountains. Near N. boundary of Parish, 2 3/4 miles NW by N of St. Clodock's Church (the mother church)* No. of Ordnance Sheet (6 in.). *XLIII. NE*

3. **STRUCTURAL MATERIAL,** of (1) Walls (2) Dressings (3) Roofs.

4. **HISTORICAL DEVELOPMENT,** with dates and plan (scale $\frac{1}{32}$).

5. **COMPARATIVE VALUE AS A MONUMENT,** with mention of special features (if any).

6. **ARCHITECTURAL DESCRIPTION,** with measurements and dates (see order of description below).

7. **FITTINGS** (see order of description below).

8. **CHURCHYARD.**

9. **CONDITION.** *Good but the West wall (modern) is damp owing to exposed situation.*

10. **VISITED BY** (names with dates). *A.T. Phillips. J.W. Blue March 15th 1927*

11. **BIBLIOGRAPHY.** *Cambs. Arch. Assoc. - Arch. Cambrensia's 6th series II p. 259. Early inscribed slab at Llanveynoe by J.R. Allen*

12. **SIGNATURE OF INVESTIGATOR.** *J.W. Blue*

(N.B.—Only 1, 2, 9, 10, 11 and 12, to be filled in here.)

ORDER OF DESCRIPTION FOR PARTS OF CHURCHES AND THEIR FITTINGS.

(Generally: from E. to N. to S. to W. of details of each wall; if an E. or W. wall, from N. to S.; if a N. or S. wall, from E. to W.)

ARCHITECTURAL DESCRIPTION, in the following order:—

- | | | |
|------------------|--------------------|------------------|
| 1. Chancel. | 6. Central Tower. | 11. South Aisle. |
| 2. North Vestry. | 7. North Transept. | 12. West Tower. |
| 3. North Chapel. | 8. South Transept. | 13. North Porch. |
| 4. South Vestry. | 9. Nave. | 14. South Porch. |
| 5. South Chapel. | 10. North Aisle. | 15. West Porch. |
16. Crypts and Charnel Vaults, after the parts under which they occur.
17. Vaulting, Clearstoreys and Upper Storeys, with the parts to which they belong.
18. Abnormal Structural Features (e.g., Transeptal and Aisle Chapels, extra aisles, towers, etc.), immediately after the parts with which they are most nearly connected.
19. Roofs, grouped together but in the order of the parts to which they belong.

DESCRIPTION OF DETAILS under (1)–(19) to be in the following order, giving material wherever remarkable:—

Walls: (a) plinths (b) string-courses (c) buttresses (d) parapets. Each wall to be described from E. to W. or N. to S. with details as to arches, windows and doorways.

Arches and Doorways: (a) date (b) number of orders (c) shape of arch or head (d) label (e) responds or jambs.

Windows: (a) date (b) number of lights (c) type of tracery (d) shape of head (e) external label (f) external and internal jambs (g) rear arch (h) internal label.

FITTINGS (see list below): mark with a 'tick' ✓, when present; delete when absent; add the letter 'M' when later than 1714. Give cross references where necessary (e.g., from Brasses to Monuments).

- | | | |
|----------------------------------|--|---|
| 1. Altars. | 18. Fonts. | 35. Poor-box. |
| 2. Bells and bell-frames. | 19. Font-covers. | 36. Pulpits. |
| 3. Biers. | 20. Galleries and their staircases. | 37. Rain-water heads. |
| 4. Books. | 21. Glass. | 38. Recesses. |
| 5. Brackets. | 22. Helms, etc. (funeral). | 39. Reredos. |
| 6. Brasses and indents. | 23. Hour-glasses and hour-glass stands. | 40. Royal arms. |
| 7. Chairs. | 24. Images. | 41. Screens. |
| 8. Chests. | 25. Inscriptions and scratchings. | 42. Seating. |
| 9. Clocks. | 26. Lecterns. | 43. Sedilia. |
| 10. Coffins and Coffin lids. | 27. Lockers. | 44. Staircases (wooden). |
| 11. Collecting boxes or shovels. | 28. Monuments (with their recesses) and Floor-slabs. | 45. Stalls. |
| 12. Communion tables. | 29. Niches. | 46. Stoups. |
| 13. Communion rails. | 30. Organs and organ-cases. | 47. Sundials. |
| 14. Consecration crosses. | 31. Paintings. | 48. Tiles and Paving. |
| 15. Cupboards. | 32. Panelling. | 49. Weathervane. |
| 16. Doors. | 33. Piscinae. | 50. Miscellaneous (architectural fragments not in situ and fittings of doubtful purpose). |
| 17. Easter sepulchres. | 34. Plate. | |

Fittings of abnormal occurrence (e.g., Baptistry, Chrismatory, Candelabra) to be taken in their proper alphabetical order.

County.

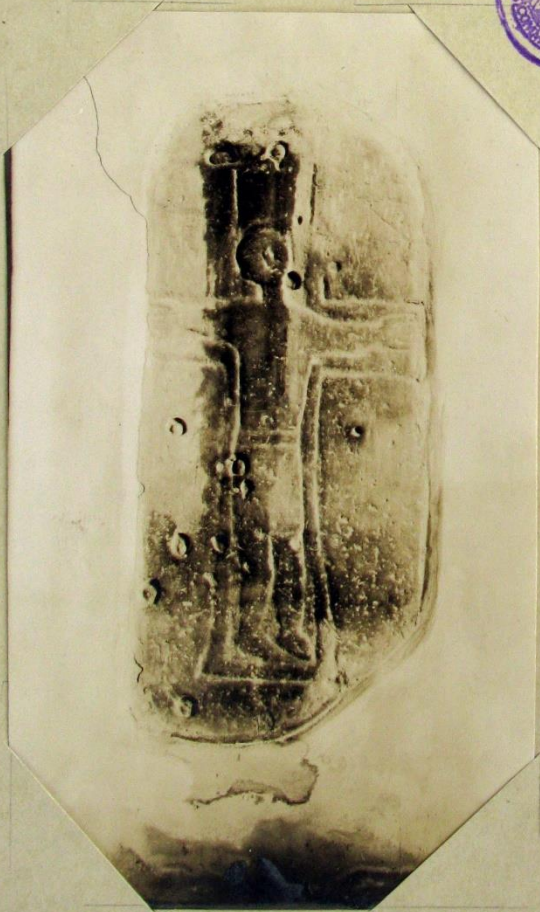
Herefordshire

Parish.

Llanveynoe

Sub-Commission (Ecclesiastical).

No. of Monument.



S. Peters Church Llanvynoe. Chancel + Nave in one, S. Vestry, S. Porch

Situation

In a lonely position in the Black Mountains near N end of Parish

*Natural. Sandy limestone rubble without dressed quoins at E. angles. W. wall modern
Roof of stone slabs*

*History. The church is of 13th century date as a tiny rectangular building.
It was restored in and was enlarged to the W. by about one third its
length in 1912.*

*Comp. Value. The building of small interest but the two nicely carved slabs now set up
in the Nave wall are curious. The external stone bench on the S. wall is an unusual
feature which occurs also at Longtown and Craswell.*

Description. Chancel + Nave in one ($43\frac{3}{4}$ ft. by $17\frac{1}{4}$ ft.)

*The E. window is of two cinquefoiled lights under a square head with an
external label: apparently all modern.
The wall is gabled.*

*In the N. wall two glazed windows each of one trefoiled light: both modern, they
have shouldered lintels inside.*

*Between them is a 13th c. lancet now blocked: the head in two stones has been
grooved to imitate narrow courses of rubble*

*The western third of the N wall is modern the old W. angle showing is a
partly straight joint and some filling in rubble of different character to the rest - E. of
the (former) angle may possibly indicate a former window.*

In S. wall are two modern windows like those opposite.

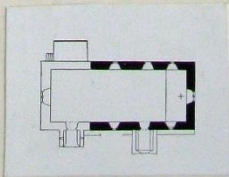
*Between them the S. vestry probably was a porch formerly, or on the site of one: the doorway
into it is modern*

*Further W. is a partly straight joint between old & new walling & W. of this a
modern pointed doorway and porch*

Along the S. wall outside is a stone bench from the E. end to the S. porch.

*The W. wall with a traceried two-light window and a bell cote for one bell is
all modern.*

The Roof is modern.



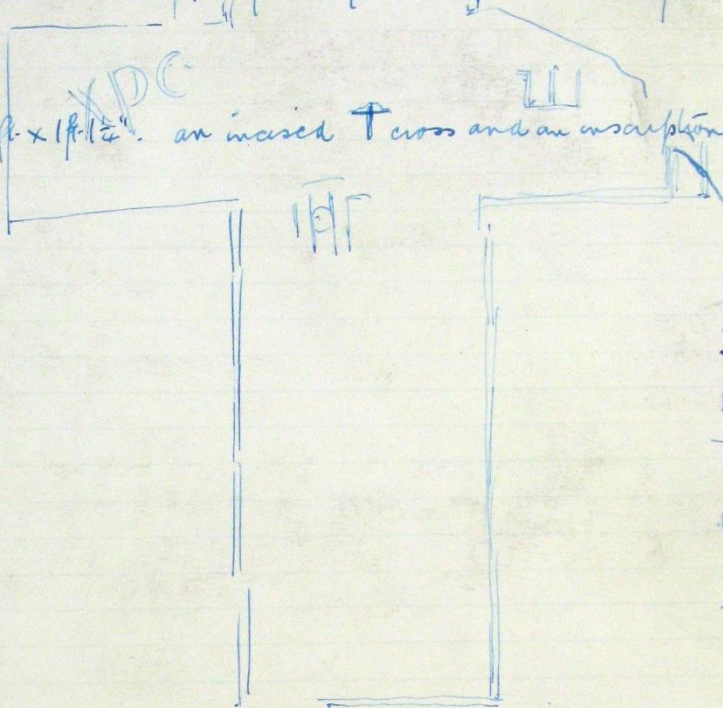
Zethenp

In the S. wall are reset two carved stones of unusual type.

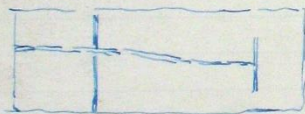
1. 4'2" x 1'9 1/2. An incised Crucifix very crudely carved, partly in low relief.



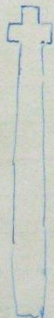
2. 2ft. x 1ft. 1 1/2. an incised T cross and an inscription



In S. wall opposite E. approach
a stone has an incised
cross



Lying in Churchyard against S. boundary wall
The stone of a churchyard cross & wayside cross
6ft long



IN
ECCE
III

IN
ECCE
III



