

Woolhope Club website: information on images used on Home Screen

TWNFC is the abbreviation for *Transactions of the Woolhope Naturalists' Field Club*

Archaeology



Woolhope Club Field Meeting to Arthur's Stone 25 May 1882 *TWNFC* pp. 164-9

Archaeology



Kenchester (Magnis) painted wall plaster *TWNFC* 1912-3 Plate 29

Buildings



Hereford Market Hall in High Town before its demolition in 1861

Buildings



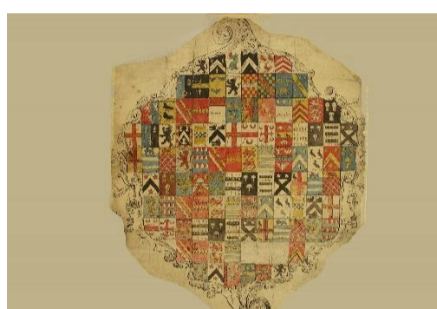
Hereford, no. 9 Eign Street when the RCHME surveyors visited in 1930

History



Wilton Bridge by Waudby 1839

History



Armorial showing the descent of Simcoe family from the Powells and Gwilyms of Whitchurch. Devon RO

Geology



The Dripping Well on the Great Doward

Geology



2018 Geology Field Meeting to Huntsham

Nature



Six-spot burnet moth on knapweed

Nature



Silver-washed fritillary on hogweed

People



Penraig Garage run by Tom and Florrie Swallow (Private collection)



A Woolhope Club Field Meeting in 1884 to Bach Tump and Berrington from an album in the Club library

Maps



1771 Monnington Court estate map, Woolhope Club library.

Maps



1577 Herefordshire county map by Christopher Saxton

Pottery



Romano-British lamp and a medieval jug found at the old Crystal Rooms in Hereford

Pottery



Post-medieval slip-coated pottery